



ARTISTIC REPRESENTATION
WILLOW RIDGE SERIES



THE PARKDALE III

2204 SQ. FT.
4 BEDROOMS – 2.5 BATHS
OPEN CONCEPT PLAN
VAULTED GREAT ROOM & KITCHEN
2ND FLOOR LAUNDRY
ENERGY STAR CERTIFIED CONSTRUCTION

1. FOR MORE INFO

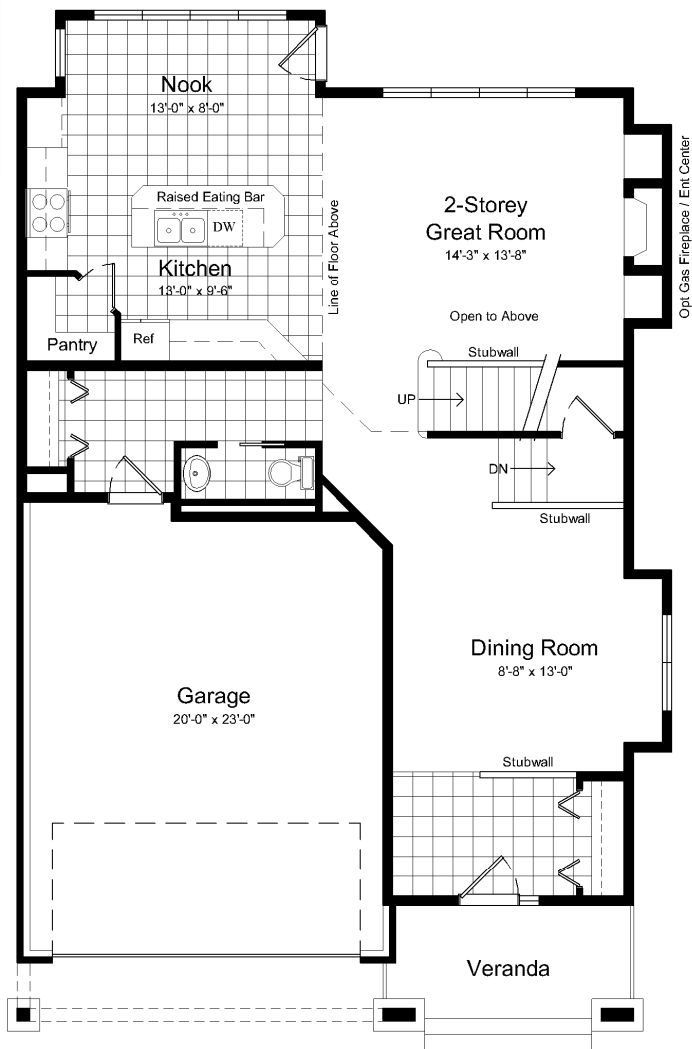
Century West Homes
Ph: 306.522.1062
www.centurywesthomes.com



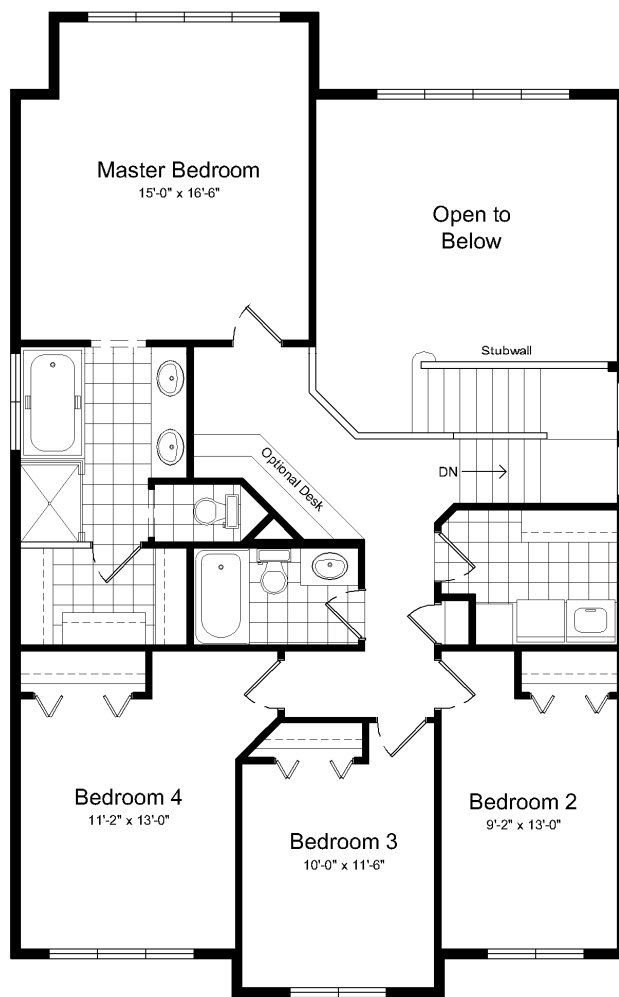
THE PARKDALE III



Contact your Century West Homes representative for upgrade options and pricing information



Main Floor
1069 Sq. Ft.



Upper Floor
1202 Sq. Ft.

Century West Homes is committed to innovative design and continued product research; therefore, plans and specifications are subject to change without notice. This plan is published by Century West homes Ltd. Dimensions shown are approximate. Reproduction of this plan in whole or in part, in any form, is prohibited without permission of Century West Homes Ltd.