



ARTISTIC REPRESENTATION



405 BROOKVIEW DRIVE – REGINA

1660 SQ. FT.

3 BEDROOMS + 2 BATHS

ISLAND KITCHEN

MAIN FLOOR LAUNDRY

9' CEILING HEIGHT

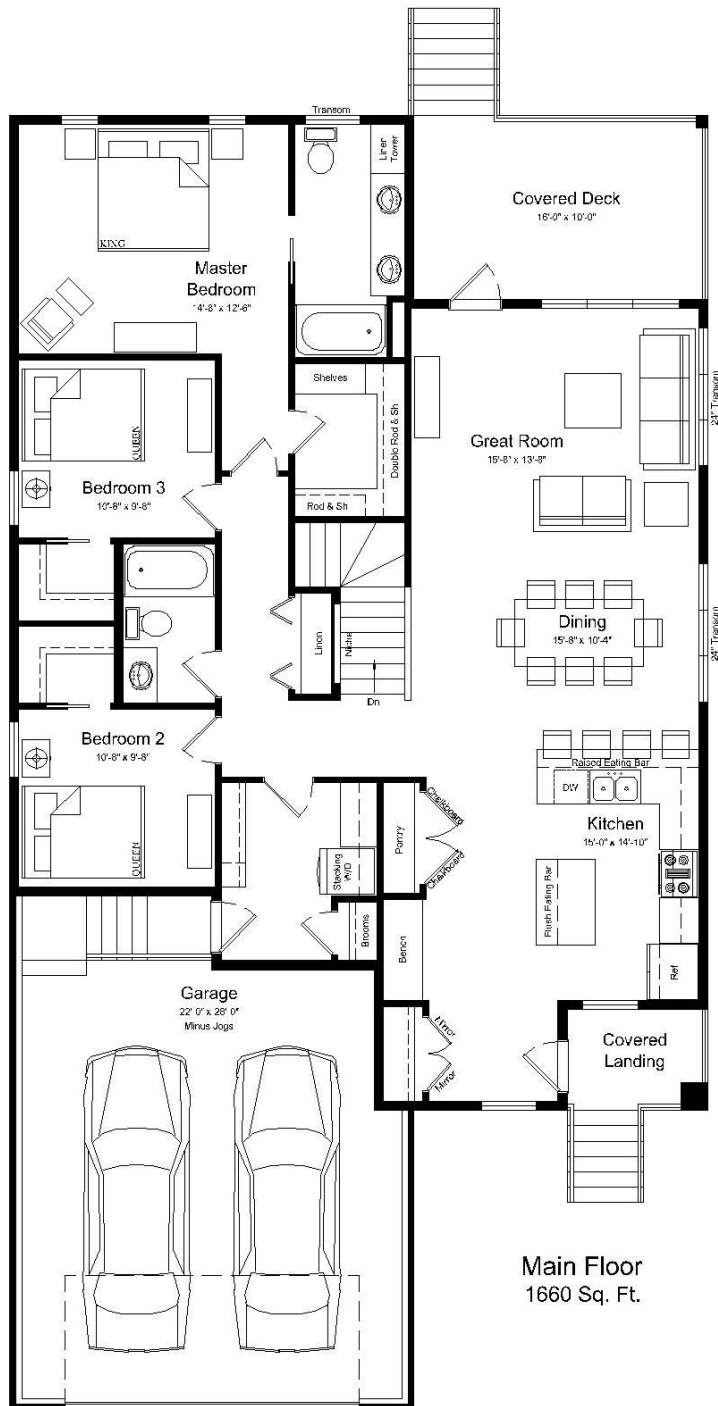
STACKED STONE, PREMIUM SIDING, AND SHAKES EXTERIOR

1. FOR MORE INFO

Century West Homes
Ph: 306.522.1062
www.centurywesthomes.com



405 BROOKVIEW DRIVE- REGINA



Included Upgrades:

- Premium Siding with Stacked Stone & Shakes to Exterior
- Central Air Conditioning
- Granite Countertops in Kitchen with Undermount Sink & Pullout Faucet
- Hardwood Flooring in Great Room & Dining Area
- Ceramic Tile in Entry, Kitchen, Mudroom & Bathrooms
- Stainless Steel Frigidaire Appliance Package to Kitchen
- Cabinets in Laundry Room
- Upgraded Lighting Package "B"
- Mirror Closet Doors at Entry
- Chalkboard Pantry Doors
- Custom Bench at Entry
- Covered Rear & Front Decks with Composite Decking
- Transom Window Over Front and Rear Exterior Doors
- Full 'Naples' Insert in Front Exterior Door
- Exterior Basement Walls Framed, Insulated, and Drywalled
- Finished Garage with Polished Slab

Contact your Century West Homes representative for a complete list of included upgrades & specifications